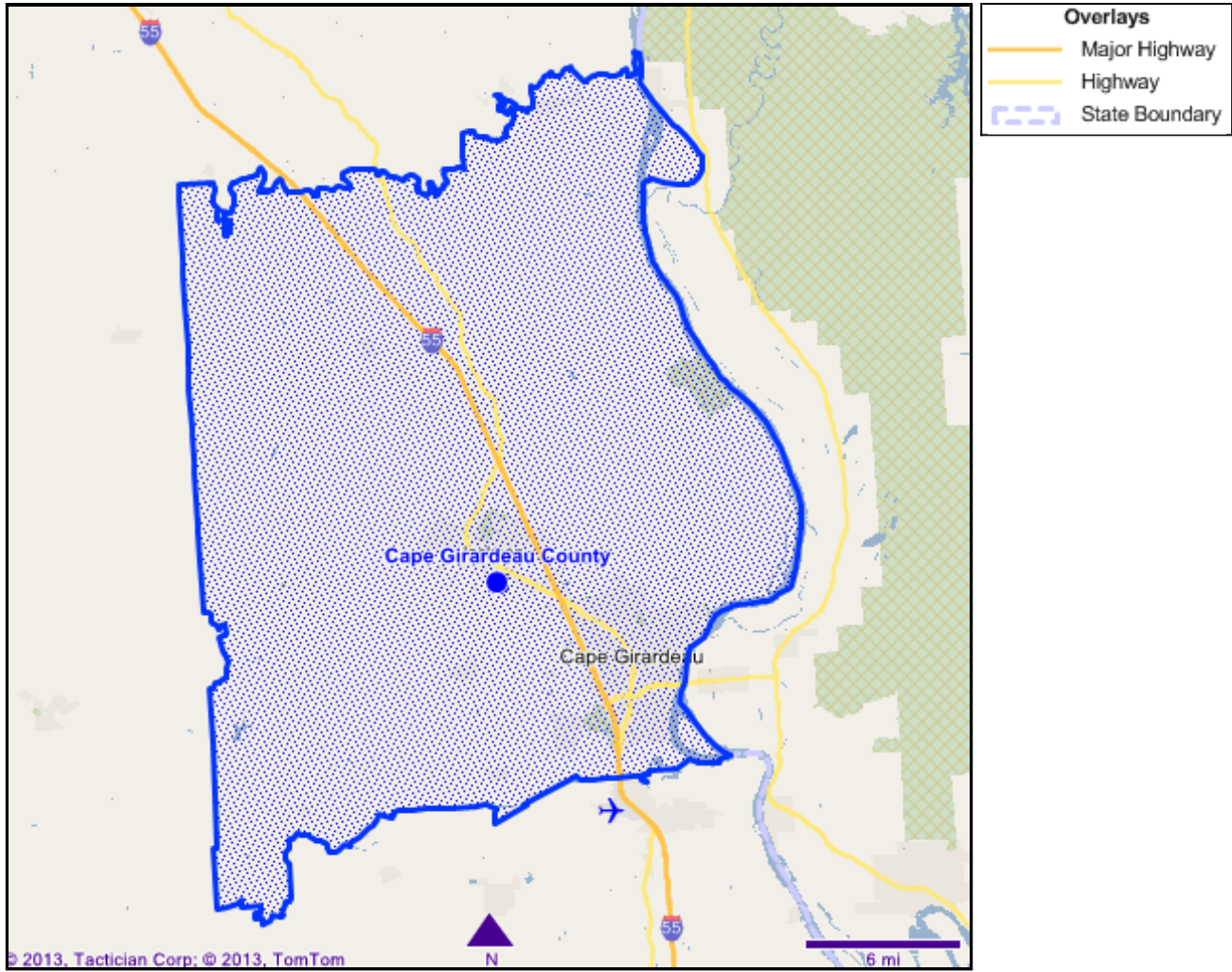


### Education Attainment - Summary

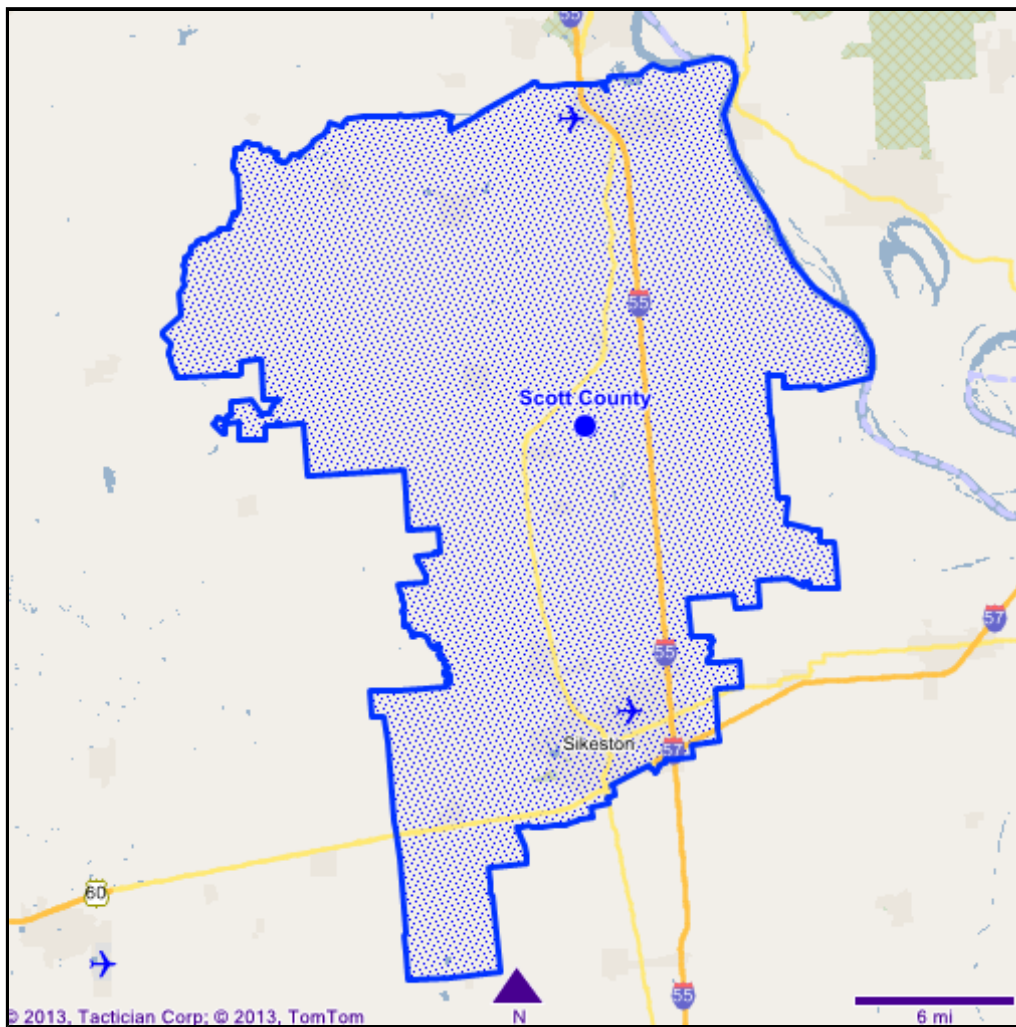
Analysis Level: ZIP (Polygon)

4/1/2013



Longitude: -89.646965  
Latitude: 37.360259

Summary Analysis of Education Attainment	
	Trade Area built from components
Education: < Grade 9 (2012)	2,769
Education: Grades 9-12 (2012)	4,352
Education: High School (2012)	16,868
Education: Some College (2012)	10,162
Education: Associate Degree (2012)	2,310
Education: Bachelors Degree (2012)	8,829
Education: Graduate Degree (2012)	4,595
Education: < Grade 9 (2017)	3,009
Education: Grades 9-12 (2017)	4,711
Education: High School (2017)	18,207
Education: Some College (2017)	10,914
Education: Associate Degree (2017)	2,475
Education: Bachelors Degree (2017)	9,442
Education: Graduate Degree (2017)	4,914



Overlays	
	Major Highway
	Highway
	State Boundary

Longitude: -89.579239  
Latitude: 37.056355

Summary Analysis of Education Attainment	
	Trade Area built from components
Education: < Grade 9 (2012)	3,094
Education: Grades 9-12 (2012)	3,885
Education: High School (2012)	12,343
Education: Some College (2012)	4,858
Education: Associate Degree (2012)	750
Education: Bachelors Degree (2012)	2,630
Education: Graduate Degree (2012)	1,296
Education: < Grade 9 (2017)	3,094
Education: Grades 9-12 (2017)	3,862
Education: High School (2017)	12,262
Education: Some College (2017)	4,790
Education: Associate Degree (2017)	742
Education: Bachelors Degree (2017)	2,586
Education: Graduate Degree (2017)	1,271

Internet Marketing Solutions provided by:



URL to this document: <http://www.mapscape.com/report/50D61F977D6B45E2AB70025FEE74DD04/1.HTML>