

CAPE GIRARDEAU AREA

MAGNET

Attracting Business and Industry

REAL IMPACT

Economic Development News from Cape Girardeau Area MAGNET

Cape Girardeau * Jackson * Scott City * Cape Girardeau County, Missouri

Volume 2, Issue 2

www.capeareamagnet.com

June 2013

In This Issue

[Missouri's Newest MPO](#)

[Liberty Utilities](#)

[Transamerica Corridor](#)

[Union Pacific](#)



Featured Available Properties:

FOR SALE



**Redevelopment Site Ready
for a New Company**

**221 Fountain Street
Cape Girardeau, MO**

This 25,000-square-foot historic building is versatile for many uses and is located within the Central

Welcome to the Cape Girardeau Area MAGNET's REAL IMPACT newsletter. This newsletter will feature some of the latest economic development news from the Cape Girardeau, Missouri area. Please feel free to share this information with others who may be interested.



Missouri's Newest MPO Recognized in the Cape Girardeau Area

The Governors of Missouri and Illinois officially recognized the Southeast Metropolitan Planning Organization (SEMPO) as the policy-making organization for the Cape Girardeau-Jackson, MO-IL Metropolitan Statistical Area. SEMPO's Board of Directors and Technical Planning Committee will oversee transportation planning for the urbanized area. The area covers portions of the State of Missouri, the State of Illinois, Cape Girardeau County, Scott County, Alexander County, the City of Cape Girardeau, the City of Jackson, and the Village of East Cape Girardeau.



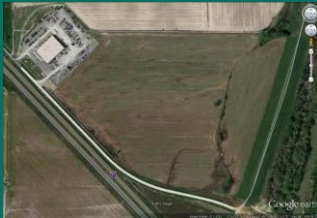
Liberty Utilities Breaks Ground in Jackson, MO

Business District in Downtown Cape Girardeau. 221 Fountain Street has two stories, basement, high ceilings and large open spaces, providing a blank slate for a creative design. This property is ideal for professional offices or mixed-use developments. The building has new elevators, electrical, plumbing and HVAC.

CONTACT:
John Mehner
Cape Area MAGNET
1-800-314-3345
or
jmehner@capechamber.com

Featured Available Properties:

FOR SALE



Manufacturing Site Available

**East Outer Road
Scott City, MO**

This 21.5 acre site is conveniently situated in the Rhodes Industrial Park in Scott City, Missouri. The site has access to city utilities and is in close proximity to the Southeast Missouri Regional Port Authority (3.0 miles) and the Cape Girardeau Regional Airport (2.0 miles). Neighboring businesses are manufacturing and transportation service facilities. The owner has additional acreage adjoining the parcel for larger projects.

CONTACT:
John Mehner
Cape Area MAGNET
1-800-314-3345

Liberty Utilities, a water, natural gas and electric transmission and distribution utility, recently broke ground at its future site in the North Jackson Industrial Park. Liberty plans to build a 22,000-



square-foot corporate headquarters, which will serve approximately 82,500 central region natural gas customers in Missouri, Illinois and Iowa. The \$2.8 million facility will be built on seven acres of land which was purchased from the City of Jackson. Local contractor Penzel Construction of Jackson is scheduled to complete the project this fall. Liberty Utilities currently operates in Arizona, Arkansas, California, Georgia, Illinois, Iowa, Missouri, New Hampshire and Texas. The operation has already created 25 new jobs in Jackson.



Transamerica Corridor Impact Study Begins

The Tier 1 Environmental Impact Statement study for the Transamerica Corridor project is underway. The Illinois Department of Transportation is the lead agency on the project, working in conjunction with the Federal Highway Administration. The Little Egypt Joint Venture team, a joint venture between partners Horner & Shifrin, Inc. and Bernardin, Lochmueller and Associates, Inc., has been retained by IDOT to lead the 66 Corridor Study. A website has been established at <http://www.66corridor.org/>. Interested parties are encouraged to visit the website to obtain more information on the project and join the mailing list for updates. The East-West Transamerica (66) Corridor is a Congressionally-designated, high-priority highway that is proposed to span the United States from California to Virginia.



Union Pacific Railroad Invests in Missouri

or
jmehner@capechamber.com

Cape Girardeau, MO



Learn more about what
our area has to offer at
www.visitcape.com

Union Pacific Railroad is adding to Missouri's transportation infrastructure by investing \$21 million in the Bell City area, in southeast Missouri. The company is constructing over 9 miles of second main line track and plans to complete the project by the end of October. The project is expected to provide for projected rail traffic growth, improve train operating efficiency, increase capacity on the rail line and enhance safety. Union Pacific Railroad is the principal operating company of Union Pacific Corporation and operates from all major West Coast and Gulf Coast ports to eastern gateways, connects with Canada's rail systems.



Contact us today to learn more about economic development opportunities or sites available in the greater Cape Girardeau, Missouri area.

Sincerely,

John Mehner
Cape Girardeau Area Magnet