

CAPE GIRARDEAU AREA

**MAGNET**

Attracting Business and Industry

# REAL IMPACT

Economic Development News from Cape Girardeau Area MAGNET

Cape Girardeau \* Jackson \* Scott City \* Cape Girardeau County, Missouri

Volume 1, Issue 5

[www.capeareamagnet.com](http://www.capeareamagnet.com)

December 2012

## In This Issue

[Retail Ready](#)

[Commercial Site](#)

[\\$1.8 Million Retail Development](#)



## **Featured Available Properties:**

### **For Sale**



### **Highly Visible Site for a Retail Location**

This 6-acre site is currently available for purchase, zoned commercial (C-2) and located on East Jackson Boulevard (US HWY 61/MO Hwy 34), which is a major thoroughfare in Jackson, Missouri. The site is

Welcome to the Cape Girardeau Area MAGNET's REAL IMPACT newsletter. This month's newsletter will feature some of the latest investments in transportation from the Cape Girardeau, Missouri, area. Please feel free to share this information with others who may be interested.



## **\$1.8 Million Retail Development Announced**

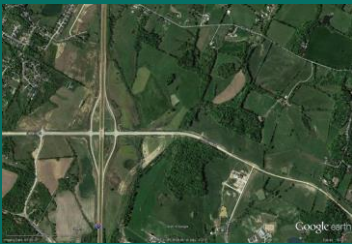
Academy Sports + Outdoors has announced a new \$1.8 million retail development in Cape Girardeau, MO. The 71,680 square-foot store will be located at 270 Shirley Drive, between Sam's Club and Kohl's off Siemers Drive. Academy Sports + Outdoors is a Texas-based outdoor lifestyle retailer, which sells hunting, fishing, and camping equipment, sports and leisure products, footwear, apparel and other items.

Academy Sports + Outdoors has more than 140 stores across the U.S. with Missouri locations in Joplin and Springfield.

graded and ready for construction. Utilities are available at the site. The 2011 traffic count on East Jackson Boulevard is 21,800 AADT. Taxable sales revenue for the County of Cape Girardeau in 2011 was \$1.24 Billion.

**CONTACT:**  
**John Mehner**  
**Cape Area MAGNET**

**573-334-5000** or  
[jmehner@capechamber.com](mailto:jmehner@capechamber.com)



### **NEW Business & Technology Park Announced**

The City of Cape Girardeau, located in southeast Missouri, recently acquired 248 acres at mile marker 102 along Interstate 55. The site, less than a 1/10 of a mile from the Interstate, is well positioned for Distribution Centers, Light Manufacturing, Business and Technology Firms, and also has additional opportunities for multiple commercial and retail prospects. Cape Girardeau is located less than two hours south of St. Louis, Missouri and three hours north of Memphis, Tennessee.

**CONTACT:**  
**John Mehner**  
**Cape Area MAGNET**  
**573-334-5000** or  
[jmehner@capechamber.com](mailto:jmehner@capechamber.com)

**Cape Girardeau, MO**



## **4,000 SF Addition Announced**

Spartech Corporation, a plastics manufacturing company in Cape Girardeau, MO, has announced plans to build a 4,000 square-foot addition to its facility on Nash Road, and will add eight jobs with an average starting yearly wage of \$29,031. Spartech currently employs approximately 230 people. Spartech will be eligible to receive incentives from the state of Missouri if it meets certain requirements because the facility is located within a designated enhanced enterprise zone. The cost of the expansion project is estimated to be \$900,000.

Cape Girardeau County has had an enhanced enterprise zone since 2011. The EEZ includes the SEMO Port Authority, several industrial sites in the cities of Cape Girardeau and Jackson, property along Nash Road and the Procter & Gamble and Nordenia sites north of Cape Girardeau.

In October, Ohio-based PolyOne Corp. announced that it would purchase Spartech.

Contact us today to learn more about economic development opportunities or sites available in the greater Cape Girardeau, Missouri, area.

Sincerely,

*John Mehner*

Cape Girardeau Area Magnet

(573) 334-5000



Learn more about what  
our area has to offer at  
[www.visitcape.com](http://www.visitcape.com)